

### SPECIFICATIONS

#### Features/Benefits



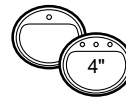
- 1.2 gpm (4.5 L/min) Max Flow @ 60 psi with Laminar Water Stream
- Alternative Flow Rates Available with Spray Water Stream
  - 1.0 gpm (3.8 L/min) When Used with DA613082N Aerator
  - 0.5 gpm (1.9 L/min) When Used with DA613081N Aerator
- 5 5/16" Spout Height, 4 7/8" Spout Reach
- Ceramic Disc Cartridge
- Includes Metal Touch-Down Drain Assembly
- Single Hole Mount
- Optional Deck Plate, DA607568, Sold Separately
- Temperature Indicators Included on Faucet Body

#### Available Color/Finishes

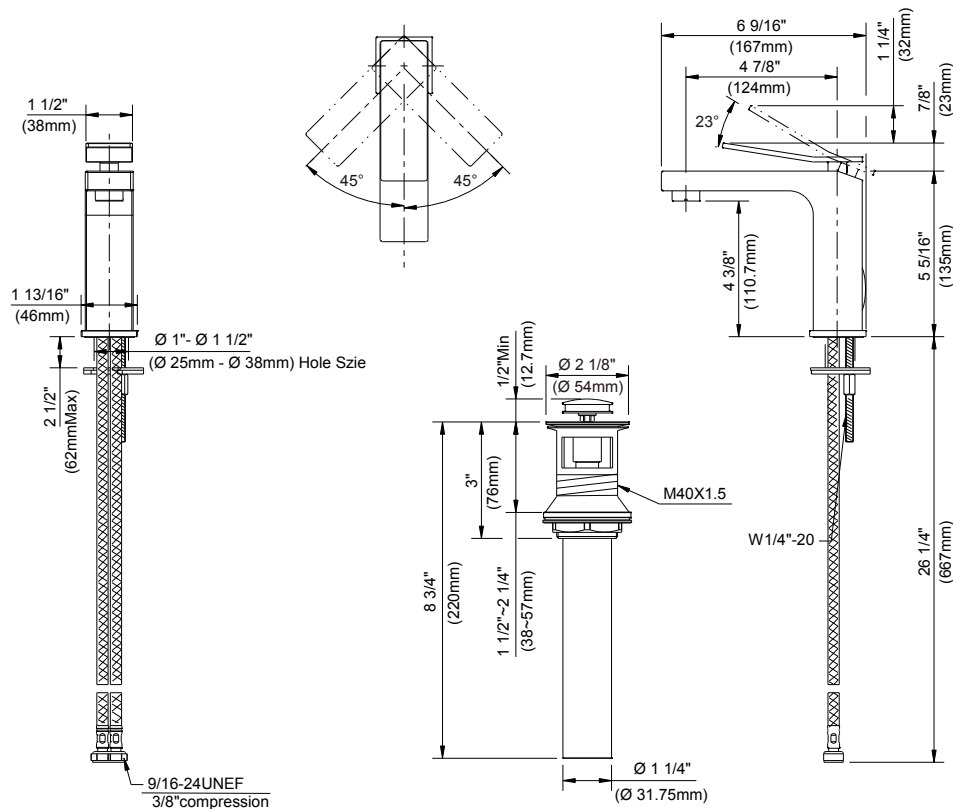
Chrome

Please see [gerberonline.com](http://gerberonline.com) or current price list for available finishes. Finish is defined by additional suffix.

#### Mount Type



#### Standards & Certifications



#### Submittal Information:

Name: \_\_\_\_\_  
 Location: \_\_\_\_\_

Contractor: \_\_\_\_\_  
 Contact #: \_\_\_\_\_